

## Details for performances

### All Students will need...

**ALL Students must arrive & leave all dress rehearsals & performances in full Theatre Class uniform. Please ensure that all items are named.**

#### SHOES

**ALL Students must have the correct footwear for the rehearsals and performances. Please ensure your child has either plain black plimsolls, plain black jazz shoes or plain black ballet shoes. No other shoes are acceptable.**

#### MAKEUP

For the performances (NOT dress rehearsals), all pupils (including boys) must arrive at the theatre with makeup already applied. They will need foundation slightly darker than their own skin tone, but not too orange, blusher, and mascara. This will prevent the children looking "washed out" under the stage lights.

#### HAIR

As usual, we are asking that all girls who have long enough hair to arrive at the theatre with their hair already done in very neat French plaits (no wispy bits!)

#### DRESSING GOWNS

We always have a very strict rule, as in any professional theatre, that there is no eating or drinking whilst wearing costumes. Costumes are an enormous expense for us, often made out of fabric that is easily marked but not easily washed. Even water leaves a very visible stain. In order to save the costumes & allow the children to have a drink, **every child should have their own NAMED dressing gown for use at productions.** They can change into this on arrival at dress rehearsals & performances before changing into their costume & can quickly put it on over their costume to have a drink .

#### FOOD & DRINK

When rehearsals start at 4.00 pm we would like the children to have their packed tea on arrival at the theatre before the rehearsal starts. We would ask that your children are fed before they arrive at the theatre for other rehearsals that do not commence straight after school and for the performances. **Snacks are not permitted during performances.** It gets very hot back stage during productions, please ensure that your child has plenty of water to drink—**ONLY WATER PLEASE!**

### Timings for shows

#### All Students

Arrive @ 6 pm for evening performances & 1.00 pm for the Saturday & Sunday Matinees.

#### DROP OFF/COLLECTION & SIGNING IN & OUT

**ALL STUDENTS** (including Seniors under Year 12 at school) must be signed in **AND** out by their own mother or father. If anyone other than their mother or father is to do this (including step parents and grandparents) we **MUST** have written permission from the mother or father **PRIOR** to the show.

Please sign in & out at the Stage Door at the rear of the Oak Suite. Seniors will go backstage, Nippers, Juniors & Dancers will go through the Fire escape into The Oak Suite.

Pick up will be at approx. 9.30 pm. (4.30 pm for the matinee)

**NO-ONE APART FROM PERFORMERS & AUTHORISED CHAPERONES ARE PERMITTED BACK STAGE OR IN THE OAK SUITE**



## Welcome Back!

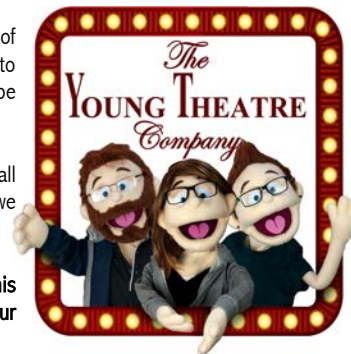
**Welcome back to the start of a brand new and exciting term!**

We hope you had a great summer break - we certainly had a busy one, with 200 children taking part in our Summer Theatre Weeks performing the fantastic musical "*Splash!*". Well done to all those children for such successful shows! All pupils will now be busy preparing for our magical Christmas panto "*Aladdin*" (see

*below*). Of course this means lots of rehearsal & performance dates to put in your diary, and these can be found inside this newsletter.

This term's fees are now due for all pupils & classes - as always, we really appreciate prompt payment !

**Remember, you can find this newsletter & much more on our website [www.youngtheatre.com](http://www.youngtheatre.com)!**



Our fabulous pantomime "*Aladdin*" runs from Sunday 2nd to Sunday 9th December at 7pm, with Saturday Matinee at 2pm and an extra private show on Sunday 9th at 2pm. Tickets priced just £10 will go on sale from Monday 1st October, available from... **Acorn Box Office (01909 501817, open Wednesdays 12-3pm & Saturdays 12-2pm) or Online at [www.acorntheatre.net](http://www.acorntheatre.net)**

## Class Fees Now Due!

**Autumn Term class fees of £55 are now due!**

Full fees are payable in advance **on or before the first class of term.** Fees may be paid by cash, cheque or card. Please bring payments to class in a named envelope & ensure that the pupil's name and class are clearly indicated with the payment using a **Fee Sheet** (*downloaded from our website.*)

#### ● **Paying By Cheque**

Make cheques payable to **The Young Theatre Company** and write the pupils' name and class on the back.

#### ● **Paying Online**

You may also pay your fees quickly and easily online at our website **[www.youngtheatre.com](http://www.youngtheatre.com)**.

**Prompt payment is always appreciated!**



September 2018						
Mon	Tue	Wed	Thu	Fri	Sat	Sun
					1	2
3	4	5	6	7	8	9
10	11	12	13	14	15	16
17	18	19	20	21	22	23
24	25	26	27	28	29	30

October 2018						
Mon	Tue	Wed	Thu	Fri	Sat	Sun
1	2	3	4	5	6	7
8	9	10	11	12	13	14
15	16	17	18	19	20	21
22	23	24	25	26	27	28
29	30	31				

November 2018						
Mon	Tue	Wed	Thu	Fri	Sat	Sun
			1	2	3	4
5	6	7	8	9	10	11
12	13	14	15	16	17	18
19	20	21	22	23	24	25
26	27	28	29	30		

December 2018						
Mon	Tue	Wed	Thu	Fri	Sat	Sun
					1	2
3	4	5	6	7	8	9
10	11	12	13	14	15	16
17	18	19	20	21	22	23
24	25	26	27	28	29	30
31						

- Week com. 10th September **AUTUMN TERM COMMENCES**  
CLASSES IN THE CROSSING FOR FIRST WEEK BACK
- Week com. 29th October **HALF TERM**  
NO CLASSES
- Week com. 5th November CLASSES IN THE CROSSING
- Monday 26th November **RED CAST LONG PANTO REHEARSALS**  
Red Cast Nippers 4-6.30 pm  
Red Cast Juniors 4-8 pm  
Red Cast Seniors 4-9 pm
- Tuesday 27th November **YELLOW CAST LONG PANTO REHEARSALS**  
Yellow Cast Nippers 4-6.30 pm  
Yellow Cast Juniors 4-8 pm  
Yellow Cast Seniors 4-9 pm
- Wednesday 28th November **BLUE CAST LONG PANTO REHEARSALS**  
Blue Cast Nippers 4-6.30 pm  
Blue Cast Juniors 4-8 pm  
**RED CAST SENIORS & BLUE PRINCIPALS** 4-9 pm

- Saturday 1st December **RED CAST DRESS REHEARSAL**  
Red Cast Nippers, Juniors & Seniors 9 am-1 pm  
**YELLOW CAST DRESS REHEARSAL**  
Yellow Cast Nippers, Juniors & Seniors 2-6 pm
- Sunday 2nd December **BLUE CAST DRESS REHEARSAL**  
Blue Cast Nippers, Juniors &  
**YELLOW SENIORS & BLUE PRINCIPALS** 9 am-1 pm  
  
**YELLOW CAST**  
**ALADDIN PERFORMANCE—7 PM** Cast arrive at 6 pm
- Monday 3rd December **BLUE CAST (Red Cast Seniors & Blue Principals)**  
**ALADDIN PERFORMANCE—7 PM** Cast arrive at 6 pm
- Tuesday 4th December **RED CAST**  
**ALADDIN PERFORMANCE—7 PM** Cast arrive at 6 pm
- Wednesday 5th December **YELLOW CAST**  
**ALADDIN PERFORMANCE—7 PM** Cast arrive at 6 pm
- Thursday 6th December **BLUE CAST (Yellow Cast Seniors & Blue Principals)**  
**ALADDIN PERFORMANCE—7 PM** Cast arrive at 6 pm
- Friday 7th December **RED CAST**  
**ALADDIN PERFORMANCE—7 PM** Cast arrive at 6 pm
- Saturday 8th December **YELLOW CAST**  
**ALADDIN PERFORMANCE—2 PM** Cast arrive at 1 pm  
  
**BLUE CAST (Red Cast Seniors & Blue Principals)**  
**ALADDIN PERFORMANCE—7 PM** Cast arrive at 6 pm
- Sunday 9th December **BLUE CAST (Yellow Cast Seniors & Blue Principals)**  
**CHARITY ALADDIN PERFORMANCE—2 PM** Cast arrive at 1 pm  
  
**RED CAST**  
**ALADDIN PERFORMANCE—7 PM** Cast arrive at 6 pm

TERM ENDS AFTER PANTOMIME PERFORMANCES AND RE COMMENCES ON MONDAY 7TH JANUARY 2019